



Artis Metals

MANUFACTURED IN BOISE, IDAHO
SINCE 1937

"A Tradition of Quality Since 1937"

Artis Metals Company, Inc.

3323 CHINDEN BLVD., BOISE, ID 83714

(208) 336-1560 | www.artiscaps.com



POWDER COATING

Options, Benefits, & Directions

VENT STYLES WITH POWDER COATED OPTION

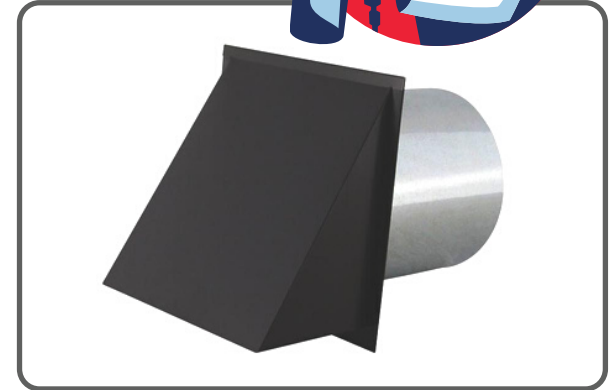
- Dryer Vent
- Range Vent
- Kitchen Vent
- Fresh Air Vent
- Wall Vent
- Roof Vent
- Eave Vent

AVAILABLE STANDARD COLORS

- Black
- White
- Brown

CUSTOM COLORS AVAILABLE

- Custom Colors Available For Additional Cost
(Please see directions and limitations on Page 3)



CONTACT FOR A QUOTE

Email: artiscaps@msn.com



Artis Metals

MANUFACTURED IN BOISE, IDAHO
SINCE 1937

"A Tradition of Quality Since 1937"

Artis Metals Company, Inc.

3323 CHINDEN BLVD., BOISE, ID 83714

(208) 336-1560 | www.artiscaps.com



POWDER COATING

Options, Benefits, & Directions

BENEFITS

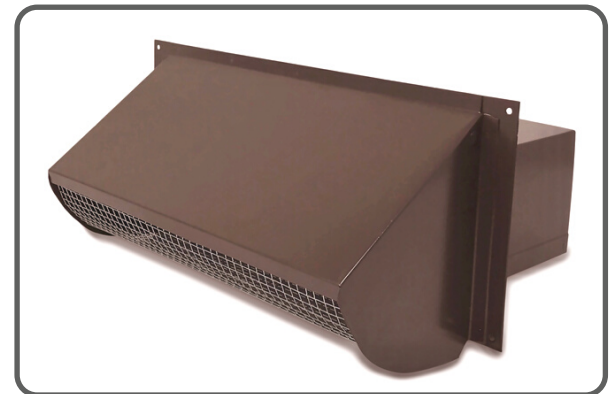
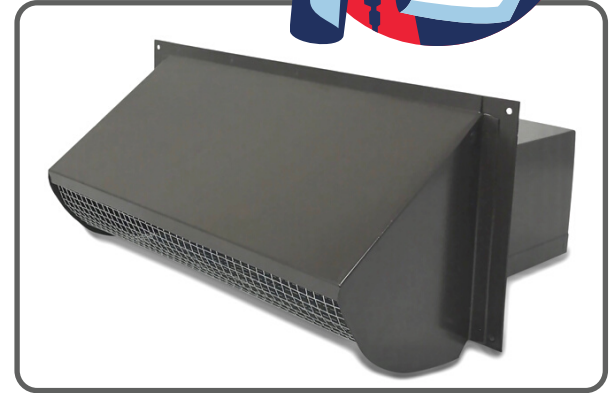
Powder Coating provides the most economical, longest-lasting, and color-durable quality finishes on virtually any type of metal.

Powder Coated surfaces are resistant to chipping, scratching, fading, and wearing. Unlike pre painted or wet painted metal, which are painted before the vent is made, the metal is cut after it has been painted, therefore edges are no longer painted or protected and more prone to rust, scratches or scuffs during the manufacturing process.

Another benefit to Powder Coating is the thermal bonding it undergoes during curing, allowing to coating to be in much thicker layers.

In addition to its physical toughness, powder coating provides superior color retention.

- **Color Match Your Vents**
- **Large Selection of Colors**
- **Add Strength & Durability**
- **Unique**
- **Heavy Gauge Metal**
- **American Made**



CONTACT FOR A QUOTE

Email: artiscaps@msn.com



Artis Metals

MANUFACTURED IN BOISE, IDAHO
SINCE 1937

"A Tradition of Quality Since 1937"

Artis Metals Company, Inc.

3323 CHINDEN BLVD., BOISE, ID 83714

(208) 336-1560 | www.artiscaps.com



POWDER COATING

Options, Benefits, & Directions

DIRECTIONS FOR CUSTOM COLOR MATCHING

COLOR CODES -

All custom orders must have a sample of the color to match. The best way is to provide the *powder color code* or a dry paint chip taken from color needing to be matched.

NOTE: The name of a color needing to be matched could lead to incorrect color matching and cannot be used for custom matching.

UNIQUE CUSTOM COLORS -

There are price increases and extended lead times associated with custom color matching, please contact us for details and to request a quote.

NOTE: Certain color matches may be a "blend" of powder colors. These blends are often the reason for increased prices. You may be required to purchase the entire minimum quantity of powder being used.

- **Minimum Order of 6 Vents Per Color**
- **Turbine Vents Not Available for Powder Coating**



CONTACT FOR A QUOTE

Email: artiscaps@msn.com