

ARTIS METALS COMPANY, INC.

80 YEARS
OF QUALITY

HEAVIER GAUGE

FRIENDLY SERVICE

AMERICAN MADE



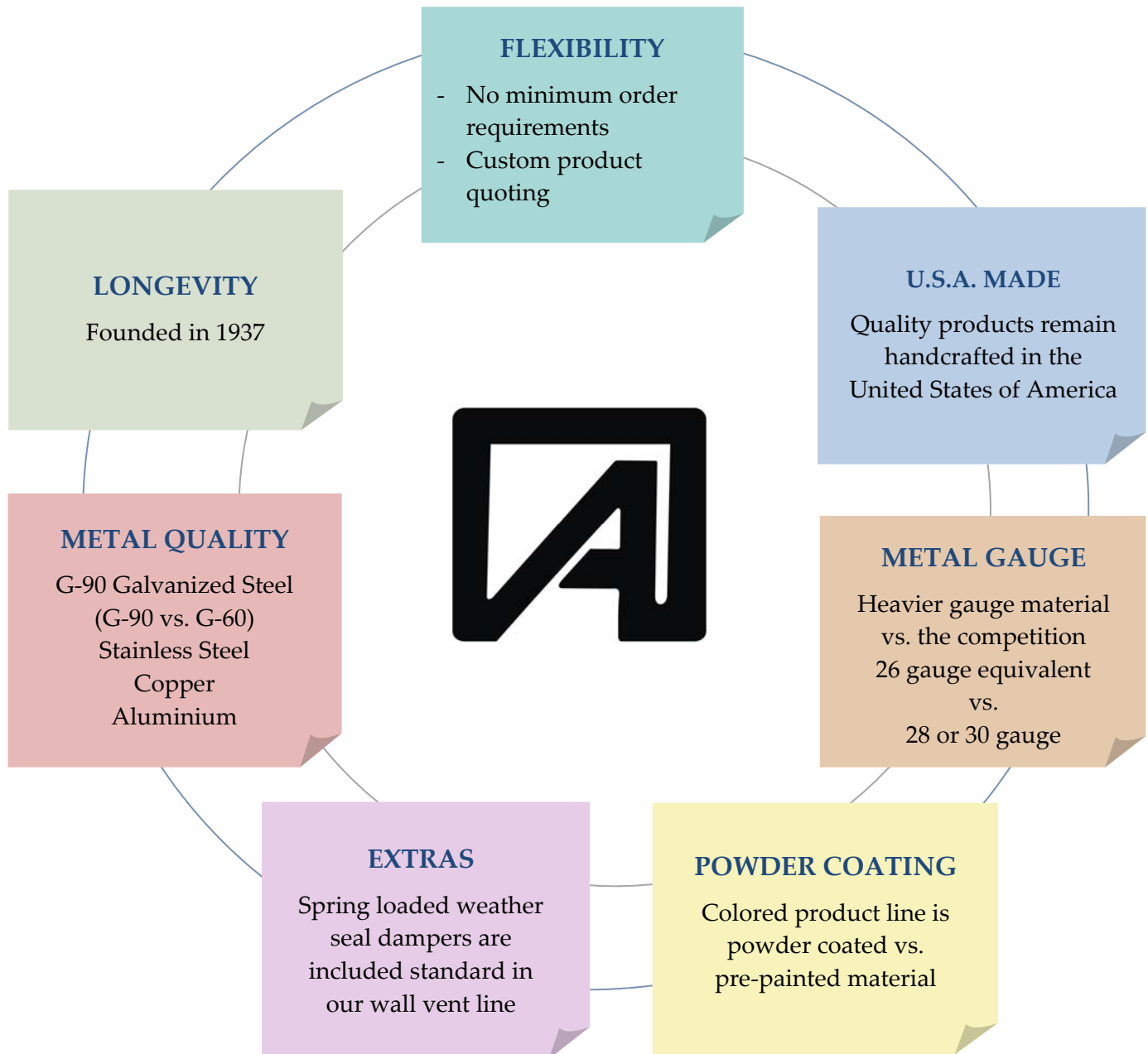
Artis Metals Company, Inc.
3323 Chinden Blvd., Boise, ID 83714
Website: www.artiscaps.com
E-mail: artiscaps@msn.com
Phone: 208-336-1560
Toll Free: 800-892-2277
Fax: 208-343-9679



PRICE LIST

Effective June 4, 2018

WHY CHOOSE ARTIS?





PHONE: (208) 336-1560 - OUTSIDE IDAHO: (800) 892-2277 • FACSIMILE: (208) 343-9679

Website: www.artiscaps.com • E-mail: artiscaps@msn.com

GUARANTEE

All products are guaranteed to be free of defective material and workmanship for the period of one year from date of invoice. During that period, if any parts prove defective, they will be repaired or replaced free of charge at factory option; if upon receipt of a return authorization, they are returned delivered prepaid to the factory. This guarantee does not however, cover any damage caused by neglect of lubrication, accident or overload, improper installation, modification of original design or repairs made or attempted outside of the factory without written authorization from Artis Metals Company, Inc.

Correction of any verified defects by repair, replacement F.O.B. the Artis Metals Company, Inc. factory or credit to customer's account shall constitute fulfillment of the guarantee. No cash or check refunds will be issued.



CUSTOMIZATIONS & SPECIAL PACKAGING

If you need a custom product or modification to one of our existing products, please feel free to contact us. We will be happy to look at your specifications and offer a quote. Some restrictions may apply.

There are several new custom powder coating colors available to choose from. Please see our website for pricing and colors available. We also offer color matching. Supply us with the brand of color and powder color code, or send us a sample of the color you wish to match, and we will find the closest match.

We offer special packaging to our customer's specifications by request as well. This may incur an additional charge. Please contact us for more information.

TABLE OF CONTENTS

WALL VENTS	Page
Wall Cap — Intake or Exhaust Aluminum, Galvanized, Copper, Stainless Steel	5 5
Wall Cap — Reversible Damper for Intake or Exhaust, Wide Mouth, Powder Coated, Rectangular Aluminum, Galvanized, Powder Coated,	6 6 6
Wall Cap — Rectangular Copper, Stainless Steel	7
ROOF VENTS	
J-Vent — Standard Galvanized, Copper, Stainless Steel	7 7
J-Vent — Powder Coated Standard, With Extension, 6”-12” Clearance, Galvanized with Dead Soft Aluminum Flange	8 8 8
Roof Mount Exhaust Vent Galvanized, Aluminum, Black, Copper, Roof Cap — Plastic	8 8 8
Triangle Turbine Ventilator — Internally Braced Triangle Turbine Ventilator — Externally Braced	9 9
Aero-Foil Gravity Vent Master Gravity Vent	9 9
Wind Directional Cap Globe Vent	10 10
CHIMNEY CAPS & ADAPTORS	
Cone Top Cap Galvanized, Stainless Steel, Copper, Adjustable	10 10
Vacuum Cap Vacuum Tile Cap	11 11
Chimney Cap Adaptor Adjustable Tile Adaptor	11 11

VENT BASES & FLASHINGS	Page
Roof Base Flat, Pitched, Saddle, Adjustable	12 12
Storm Collar Stand-Off Bracket	12 12
Pipe Flashing Standard Pitch, Steep Pitch, Flat Pitch, Flat with Tall Cone, Aluminum with D.S.A Flange	13 13 13
DAMPERS	
Backdraft Damper — Butterfly Backdraft Damper — Offset Pin Dryer Damper	14 14 14
Round Volume Damper (Slide In) Spool Damper (A.K.A. Dampened Start Collar)	14 14
FITTINGS	
End Cap, Plug, Plug Style Pipe Reducer, Flat Style Increaser Reducer Tapered Reducer (Three Piece) Start Collar — Standard, Extended 6”	15 15 15 16
FOUNDATION/SOFFIT & EAVE VENTS	
Foundation/Soffit Vent Eave Vent — Galvanized Eave Vent — Copper	16 17 17
OTHER AVAILABLE PRODUCTS	
Shur-Vent (Natural Gas & LP), Peak Vent Plumber’s Vent, Cricket Flashing	17 17
ORDERING AND SALES INFORMATION	
Ordering Information, Delivery Terms Free Freight Allowances, Terms of Sale	18 19

WALL CAP – ALUMINUM

DAMPER ONLY		SCREEN ONLY		DAMPER & SCREEN	
ITEM#	LIST	ITEM#	LIST	ITEM#	LIST
DWVA 3	\$15.88	SWVA 3	\$15.88	SDWVA 3	\$16.45
DWVA 4	\$16.42	SWVA 4	\$16.42	SDWVA 4	\$17.98
DWVA 5	\$18.15	SWVA 5	\$18.15	SDWVA 5	\$19.01
DWVA 6	\$19.32	SWVA 6	\$19.32	SDWVA 6	\$21.30
DWVA 7	\$22.80	SWVA 7	\$22.80	SDWVA 7	\$22.45
DWVA 8	\$25.13	SWVA 8	\$25.13	SDWVA 8	\$27.60
DWVA 10	\$44.10	SWVA 10	\$44.10	SDWVA 10	\$46.25
DWVA 12	\$53.10	SWVA 12	\$53.10	SDWVA 12	\$54.53
DWVA 14	\$65.32	SWVA 14	\$65.32	SDWVA 14	\$65.03



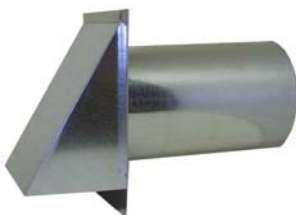
WALL CAP – COPPER

DAMPER ONLY		SCREEN ONLY		DAMPER & SCREEN	
ITEM#	LIST	ITEM#	LIST	ITEM#	LIST
DWVC 3	\$60.27	SWVC 3	\$60.27	SDWVC 3	\$81.52
DWVC 4	\$73.85	SWVC 4	\$73.85	SDWVC 4	\$81.52
DWVC 5	\$82.10	SWVC 5	\$82.10	SDWVC 5	\$86.05
DWVC 6	\$90.60	SWVC 6	\$90.60	SDWVC 6	\$98.00
DWVC 7	\$98.52	SWVC 7	\$98.52	SDWVC 7	\$102.25
DWVC 8	\$113.47	SWVC 8	\$113.47	SDWVC 8	\$122.13
DWVC 10	\$127.12	SWVC 10	\$127.12	SDWVC 10	\$129.55



WALL CAP – GALVANIZED

DAMPER ONLY		SCREEN ONLY		DAMPER & SCREEN	
ITEM#	LIST	ITEM#	LIST	ITEM#	LIST
DWVG 3	\$15.05	SWVG 3	\$15.05	SDWVG 3	\$15.82
DWVG 4	\$16.22	SWVG 4	\$16.22	SDWVG 4	\$17.98
DWVG 5	\$17.92	SWVG 5	\$17.92	SDWVG 5	\$19.01
DWVG 6	\$19.08	SWVG 6	\$19.08	SDWVG 6	\$21.30
DWVG 7	\$22.12	SWVG 7	\$22.12	SDWVG 7	\$22.45
DWVG 8	\$24.82	SWVG 8	\$24.82	SDWVG 8	\$27.60
DWVG 10	\$42.00	SWVG 10	\$42.00	SDWVG 10	\$46.25
DWVG 12	\$50.47	SWVG 12	\$50.47	SDWVG 12	\$54.53
DWVG 14	\$62.22	SWVG 14	\$62.22	SDWVG 14	\$65.03



WALL CAP – STAINLESS STEEL

DAMPER ONLY		SCREEN ONLY		DAMPER & SCREEN	
ITEM#	LIST	ITEM#	LIST	ITEM#	LIST
DWVSS 3	\$64.30	SWVSS 3	\$64.30	SDWVSS 3	\$79.20
DWVSS 4	\$78.12	SWVSS 4	\$78.12	SDWVSS 4	\$87.28
DWVSS 5	\$88.27	SWVSS 5	\$88.27	SDWVSS 5	\$97.60
DWVSS 6	\$94.70	SWVSS 6	\$94.70	SDWVSS 6	\$104.15
DWVSS 8	\$117.58	SWVSS 8	\$117.58	SDWVSS 8	\$139.05
DWVSS 10	\$148.23	SWVSS 10	\$148.23	SDWVSS 10	\$154.28



WALL CAP – REVERSIBLE DAMPER FOR INTAKE OR EXHAUST

GALVANIZED		ALUMINUM	
ITEM#	LIST	ITEM#	LIST
RDWVG 4	\$26.70	RDWVA 4	\$32.00
RDWVG 5	\$26.70	RDWVA 5	\$32.00
RDWVG 6	\$30.35	RDWVA 6	\$36.97
RDWVG 7	\$33.50	RDWVA 7	\$46.25
RDWVG 8	\$35.55	RDWVA 8	\$47.45
RDWVG 10	\$41.30	RDWVA 10	\$54.10
RDWVG 12	\$45.80	RDWVA 12	\$58.82



WALL CAP – WIDE MOUTH

WITH SCREEN	
ALUMINUM	
ITEM#	LIST
WMSDWVA 4	\$48.50



WALL CAP – RECTANGULAR

WITH SCREEN					
GALVANIZED		ALUMINUM		PAINTED**	
ITEM#	LIST	ITEM#	LIST	ITEM#	LIST
R310S	\$25.62	RA310S	\$29.22	RP310S	\$40.89
R312S	\$27.93	RA312S	\$37.55	RP312S	\$58.40
R314S	\$30.23	RA314S	\$40.17	RP314S	\$69.20

WITHOUT SCREEN					
GALVANIZED		ALUMINUM		PAINTED**	
ITEM#	LIST	ITEM#	LIST	ITEM#	LIST
R310	\$23.75	RA310	\$27.25	RP310	\$39.08
R312	\$25.62	RA312	\$35.40	RP312	\$55.03
R314	\$27.55	RA314	\$37.95	RP314	\$58.98

WALL CAP – POWDER COATED

STANDARD COLORS; BLACK, BROWN & WHITE

DAMPER ONLY		SCREEN ONLY		DAMPER & SCREEN	
ITEM#	LIST	ITEM#	LIST	ITEM#	LIST
PDWV4	\$30.45	PSWV4	\$30.45	PSDWV4	\$30.84
PDWV5	\$34.00	PSWV5	\$34.00	PSDWV5	\$35.07
PDWV6	\$39.08	PSWV6	\$39.08	PSDWV6	\$40.58
PDWV7	\$46.41	PSWV7	\$46.41	PSDWV7	\$48.08
PDWV8	\$50.53	PSWV8	\$50.53	PSDWV8	\$53.32
PDWV10	\$74.14	PSWV10	\$74.14	PSDWV10	\$78.40



WALL CAP – RECTANGULAR COPPER

DAMPER ONLY	
COPPER	
ITEM#	LIST
RC310	\$120.19

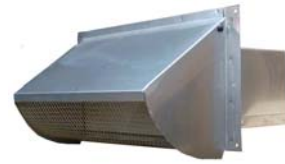
DAMPER & SCREEN	
COPPER	
ITEM#	LIST
RC310S	\$123.63



WALL CAP – RECTANGULAR STAINLESS STEEL

DAMPER ONLY	
STAINLESS STEEL	
ITEM#	LIST
RS310	\$147.13

DAMPER & SCREEN	
STAINLESS STEEL	
ITEM#	LIST
RS310S	\$149.03

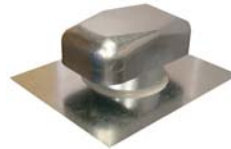


J-VENT – GALVANIZED STANDARD

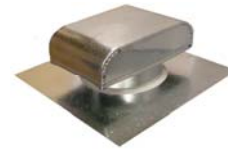
ITEM#	LIST
JV328	\$10.17
JV428	\$10.95
JV626	\$16.87
JV726	\$17.92
JV826	\$19.88
JV1026	\$29.80
JV1226	\$36.77
JV1424	\$42.25



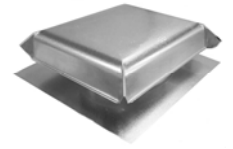
NEW HOOD STYLE
SIZES: 3" and 4"



NEW HOOD STYLE
SIZES: 6"



HOOD STYLE
SIZES: 7", 8", 10", and 12"



HOOD STYLE
SIZES: 14"

J-VENT – COPPER STANDARD

ITEM#	LIST
CJV412	\$60.03
CJV612	\$89.12
CJV812	\$105.02
CJV1016	\$168.02



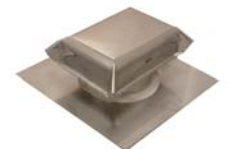
HOOD STYLE
SIZES: 4"



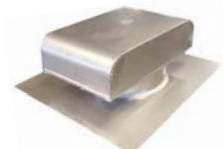
HOOD STYLE
SIZES: 6", 8", and 10"

J-VENT – STAINLESS STEEL STANDARD

ITEM#	LIST
SSJV426	\$57.35
SSJV626	\$77.95
SSJV826	\$93.52
SSJV1026	\$170.37



HOOD STYLE
SIZES: 4"



HOOD STYLE
SIZES: 6", 8", and 10"

J-VENT – POWDER COATED STANDARD

STANDARD COLORS; BLACK, BROWN & WHITE

ITEM#	LIST
PJV328	\$22.50
PJV428	\$25.12
PJV626	\$33.93
PJV726	\$35.04
PJV826	\$38.54
PJV1026	\$50.07
PJV1226	\$57.03
PJV1424	\$69.12



ROOF MOUNT EXHAUST VENT

ROUND CONNECT

GALVANIZED		ALUMINUM	
ITEM#	LIST	ITEM#	LIST
RDVG4	\$26.12	RDVA4	\$29.25
RDVG5	\$30.45	RDVA5	\$34.10
RDVG6	\$34.07	RDVA6	\$38.15
RDVG7	\$42.50	RDVA7	\$47.60
RDVG8	\$43.23	RDVA8	\$48.41

J-VENT – WITH EXTENSION

GALVANIZED	
ITEM#	LIST
JV328 HC	\$14.15
JV428 HC	\$15.55
JV626 HC	\$21.02
JV726 HC	\$22.07
JV826 HC	\$23.88



RECTANGULAR CONNECT

BLACK ONLY	
ITEM#	LIST
RDVG610	\$54.48
RDVG1010	\$67.33



**Available in powder coated colors upon request.*

J-VENT – 6"-12" CLEARANCE OR "H" DIMENSION

GALVANIZED	
ITEM#	LIST
JV328_CL	\$18.48
JV428_CL	\$18.48
JV626_CL	\$23.71
JV726_CL	\$24.84
JV826_CL	\$26.97
JV1026_CL	\$37.67
JV1226_CL	\$45.29
JV1424_CL	\$54.92



ROOF MOUNT EXHAUST VENT – COPPER

ITEM#	LIST
RDVC4	\$103.88
RDVC6	\$121.25
RDVC8	\$138.71



J-VENT – GALVANIZED (WITH DEAD SOFT ALUMINUM FLANGE)

ITEM#	LIST
JV428 DSA	\$26.12
JV626 DSA	\$31.97
JV826 DSA	\$36.33



ROOF CAP – PLASTIC

BLACK PLASTIC WITH STEM	
ITEM#	LIST
RVS4BK	\$16.66



TRIANGLE TURBINE VENTILATOR – INTERNALLY BRACED

GALVANIZED		ALUMINUM	
ITEM#	LIST	ITEM#	LIST
JB4G	\$97.07	JB4A	\$133.13
JB6G	\$97.07	JB6A	\$133.13
JB8G	\$111.57	JB8A	\$142.40
JB10G	\$114.98	JB10A	\$145.35
JB12G	\$116.68	JB12A	\$149.17
JB14G	\$216.75	JB14A	\$226.95
JB16G	\$248.45	JB16A	\$360.13
JB18G	\$302.07	JB18A	\$427.55
JB20G	\$359.43	JB20A	\$573.90
JB24G	\$592.45	JB24A	\$896.83
JB30G	\$650.25	JB30A	\$1008.53
JB36G	\$1022.28	JB36A	\$1300.50
JB42G	\$1568.25	JB42A	\$1785.00
JB48G	\$1912.50	JB48A	\$2040.00



AERO-FOIL GRAVITY VENTILATOR

GALVANIZED		ALUMINUM	
ITEM#	LIST	ITEM#	LIST
AFL3G	\$48.23	AFL3A	\$79.98
AFL4G	\$52.61	AFL4A	\$82.90
AFL5G	\$58.62	AFL5A	\$87.13
AFL6G	\$61.37	AFL6A	\$96.45
AFL7G	\$84.92	AFL7A	\$128.21
AFL8G	\$87.68	AFL8A	\$130.95
AFL9G	\$111.77	AFL9A	\$176.53
AFL10G	\$118.35	AFL10A	\$181.38
AFL12G	\$144.70	AFL12A	\$263.03
AFL14G	\$243.33	AFL14A	\$363.30
AFL16G	\$317.48	AFL16A	\$427.42
AFL18G	\$355.48	AFL18A	\$444.57
AFL20G	\$421.95	AFL20A	\$472.61
AFL24G	\$510.00	AFL24A	\$571.20
AFL30G	\$573.72	AFL30A	\$642.58
AFL36G	\$624.75	AFL36A	\$699.72
AFL42G	\$1007.25	AFL42A	\$1128.12
AFL48G	\$1147.50	AFL48A	\$1285.20



TRIANGLE TURBINE VENTILATOR – EXTERNALLY BRACED

GALVANIZED		ALUMINUM	
ITEM#	LIST	ITEM#	LIST
WW8G	\$116.85	WW8A	\$153.41
WW10G	\$139.35	WW10A	\$164.40
WW12G	\$142.67	WW12A	\$197.45
WW14G	\$267.75	WW14A	\$295.80
WW16G	\$352.00	WW16A	\$479.78
WW18G	\$403.13	WW18A	\$671.45
WW20G	\$464.68	WW20A	\$803.90
WW24G	\$658.70	WW24A	\$1036.82



MASTER GRAVITY VENTILATOR

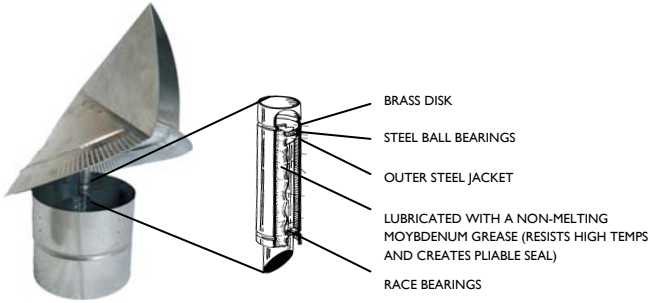
GALVANIZED		ALUMINUM	
ITEM#	LIST	ITEM#	LIST
MVR4G	\$52.61	MVR4A	\$82.90
MVR6G	\$61.37	MVR6A	\$96.45
MVR8G	\$87.68	MVR8A	\$130.95
MVR10G	\$118.35	MVR10A	\$181.38
MVR12G	\$144.67	MVR12A	\$263.03
MVR14G	\$243.33	MVR14A	\$354.72
MVR16G	\$317.48	MVR16A	\$427.42
MVR18G	\$355.48	MVR18A	\$466.42
MVR20G	\$602.77	MVR20A	\$675.10
MVR24G	\$756.20	MVR24A	\$846.95
MVR30G	\$918.00	MVR30A	\$1024.55
MVR36G	\$1262.25	MVR36A	\$1413.72
MVR42G	\$1861.50	MVR42A	\$2084.88
MVR48G	\$2320.50	MVR48A	\$2598.95



WIND DIRECTIONAL CAP

GALVANIZED		STAINLESS STEEL	
ITEM#	LIST	ITEM#	LIST
WDC5	\$48.48	WDCS5	\$120.48
WDC6	\$48.48	WDCS6	\$120.48
WDC7	\$62.87	WDCS7	\$129.22
WDC8	\$62.87	WDCS8	\$137.93
WDC10	\$82.88	WDCS10	\$177.12
WDC12	\$97.30	WDCS12	\$318.62

Spindle assembly (for informational use only)



GLOBE VENT

GALVANIZED			
ITEM#	LIST	ITEM#	LIST
GGV426	\$13.72	GGV1226	\$46.40
GGV526	\$16.17	GGV1424	\$62.30
GGV626	\$19.70	GGV1624	\$88.25
GGV726	\$22.90	GGV1824	\$120.00
GGV826	\$25.60	GGV2024	\$139.23
GGV926	\$28.68	GGV2424	\$196.10
GGV1026	\$36.50	GGV3024	\$417.07



CONE TOP CAP – GALVANIZED, STAINLESS STEEL

GALVANIZED		STAINLESS STEEL	
ITEM#	LIST	ITEM#	LIST
GCT3	\$7.98	SCT3	\$20.08
GCT4	\$8.73	SCT4	\$21.98
GCT5	\$9.50	SCT5	\$25.83
GCT6	\$10.37	SCT6	\$36.53
GCT7	\$11.28	SCT7	\$39.35
GCT8	\$13.02	SCT8	\$42.00
GCT9	\$14.83	SCT9	\$45.50
GCT10	\$15.70	SCT10	\$46.83
GCT12	\$23.12	SCT12	\$50.85
GCT14	\$36.77	SCT14	\$104.80
GCT16	\$38.67	SCT16	\$137.30
GCT18	\$61.32	SCT18	\$189.65
GCT20	\$82.12		
GCT24	\$104.02		



CONE TOP CAP – COPPER

COPPER	
ITEM#	LIST
CCT4	\$45.82
CCT6	\$57.77
CCT8	\$78.12
CCT9	\$84.80
CCT10	\$91.62
CCT12	\$129.02
CCT14	\$196.80



CONE CAP – ADJUSTABLE

(ADJUSTS TO FIT LISTED SIZES)

GALVANIZED ONLY	
ITEM#	LIST
GCT4-5	\$10.30
GCT6-8	\$15.10
GCT9-12	\$23.35



VACUUM CAP

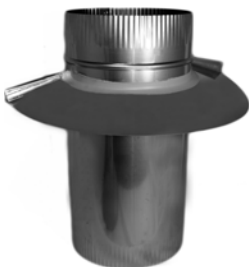
GALVANIZED		STAINLESS STEEL		ALUMINUM	
ITEM#	LIST	ITEM#	LIST	ITEM#	LIST
GVC326	\$8.98	SVC 326	\$39.70	AVC 320	\$10.95
GVC426	\$10.30	SVC 426	\$42.00	AVC 420	\$12.71
GVC526	\$11.28	SVC 526	\$45.48	AVC 525	\$13.67
GVC626	\$14.75	SVC 626	\$48.60	AVC 625	\$17.96
GVC726	\$16.65	SVC 726	\$53.57	AVC 725	\$20.53
GVC824	\$18.80	SVC 824	\$64.77	AVC 825	\$22.83
GVC924	\$21.85	SVC 924	\$80.98	AVC 925	\$26.43
GVC1024	\$31.63	SVC 1024	\$113.38	AVC 1025	\$29.55
GVC1224	\$34.98	SVC 1224	\$130.33	AVC 1225	\$41.95
GVC1424	\$62.87	SVC 1426	\$136.32	AVC 1425	\$84.75
GVC1624	\$97.15	SVC 1626	\$140.60	AVC 1625	\$121.28
GVC1824	\$136.03	SVC 1826	\$174.20	AVC 1825	\$168.27
GVC2024	\$163.20	SVC 2026	\$206.40	AVC 2025	\$199.37


VACUUM TILE CAP

GALVANIZED		STAINLESS STEEL	
ITEM#	LIST	ITEM#	LIST
GSQ824	\$49.02	SSQ824	\$111.83
GSQ81024	\$57.25	SSQ81024	\$137.70
GSQ81224	\$57.53	SSQ81224	\$141.28
GSQ81624	\$76.23	SSQ81624	\$191.23
GSQ121224	\$88.60	SSQ121224	\$239.70
GSQ121624	\$106.45	SSQ121624	\$323.87
GSQ161624	\$154.99	SSQ161624	\$401.00


CHIMNEY CAP ADAPTOR

GALVANIZED		STAINLESS STEEL	
ITEM#	LIST	ITEM#	LIST
GWCA5	\$22.38	SWCA5	\$29.51
GWCA6	\$22.38	SWCA6	\$29.51
GWCA7	\$23.17	SWCA7	\$30.85
GWCA8	\$24.42	SWCA8	\$30.85
GWCA10	\$26.03	SWCA10	\$32.03
GWCA12	\$27.75	SWCA12	\$36.50

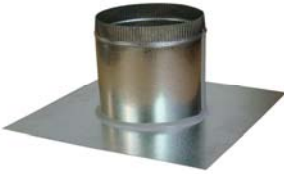

ADJUSTABLE TILE ADAPTOR

GALVANIZED		STAINLESS STEEL	
ITEM#	LIST	ITEM#	LIST
ATA88	\$32.60	SATA88	\$61.30
ATA812	\$34.72	SATA812	\$70.68
ATA1212	\$41.82	SATA1212	\$87.33
ATA1216	\$47.50	SATA1216	\$105.00
ATA1616	\$56.70	SATA1616	\$141.93

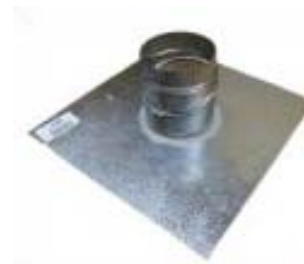
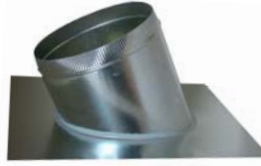


ROOF BASE – FLAT

GALVANIZED	
ITEM#	LIST
FB4	\$11.82
FB6	\$12.42
FB8	\$15.70
FB10	\$26.70
FB12	\$37.15
FB14	\$51.85
FB16	\$59.07
FB18	\$70.93
FB20	\$94.48
FB22	\$120.10
FB24	\$125.10


ROOF BASE – PITCHED

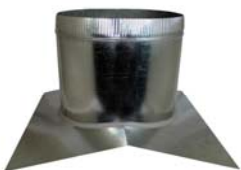
GALVANIZED	
ITEM#	LIST
PB4	\$21.83
PB6	\$21.83
PB8	\$27.90
PB10	\$39.30
PB12	\$51.20
PB14	\$65.99
PB16	\$81.27
PB18	\$95.36
PB20	\$114.25
PB22	\$142.82
PB24	\$155.73


ROOF BASE – ADJUSTABLE

GALVANIZED	
ITEM#	LIST
AB3	\$21.83
AB4	\$21.83
AB5	\$23.25
AB6	\$23.25
AB7	\$27.90
AB8	\$27.90
AB9	\$30.00
AB10	\$39.30
AB12	\$51.20
AB14	\$66.00

ROOF BASE – SADDLE

GALVANIZED	
ITEM#	LIST
SB4	\$21.83
SB6	\$23.25
SB8	\$27.90
SB10	\$39.30
SB12	\$51.20
SB14	\$66.00
SB16	\$81.27
SB18	\$95.35
SB20	\$114.25
SB22	\$142.82
SB24	\$155.73


STORM COLLAR

GALVANIZED			
SINGLE WALL		DOUBLE WALL	
ITEM#	LIST	ITEM#	LIST
SC3	\$3.15	SC3B	\$4.07
SC4	\$4.10	SC4B	\$5.36
SC5	\$5.32	SC5B	\$5.36
SC6	\$5.36	SC6B	\$6.03
SC7	\$6.03	SC7B	\$6.52
SC8	\$6.52		
SC9	\$7.42		
SC10	\$8.67		
SC12	\$10.12		
SC14	\$15.33		
SC16	\$21.11		
SC18	\$25.73		

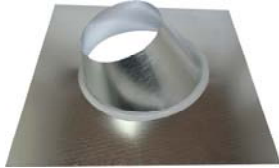

STAND-OFF BRACKET

DOUBLE WALL	
ITEM#	LIST
BRK316	\$4.67
BRK416	\$4.95
BRK516	\$8.15
BRK616	\$10.32
BRK716	\$13.52
BRK816	\$17.60



PIPE FLASHING – STANDARD PITCH

SINGLE WALL		DOUBLE WALL (INSULATED)	
ITEM#	LIST	ITEM#	LIST
G3	\$12.49	GB3	\$13.96
G4	\$13.96	GB4	\$16.56
G5	\$16.56	GB5	\$18.69
G6	\$18.70	GB6	\$22.74
G7	\$22.72	GB7	\$23.03
G8	\$23.02		
G9	\$25.88		
G10	\$25.88		
G12	\$38.01		
G14	\$59.01		
G16	\$83.59		
G18	\$106.10		
G20	\$128.14		


PIPE FLASHING – FLAT PITCH

SINGLE WALL		DOUBLE WALL (INSULATED)	
ITEM#	LIST	ITEM#	LIST
FP3	\$10.41	FP3B	\$17.19
FP4	\$12.98	FP4B	\$17.91
FP5	\$13.64	FP5B	\$19.33
FP6	\$15.74	FP6B	\$21.71
FP7	\$17.55	FP7B	\$25.00
FP8	\$19.17		
FP9	\$23.74		
FP10	\$25.50		
FP12	\$30.36		
FP14	\$47.07		
FP16	\$68.86		
FP18	\$87.38		
FP20	\$106.86		


PIPE FLASHING – STEEP PITCH

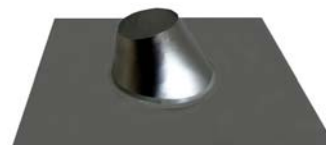
SINGLE WALL		DOUBLE WALL (INSULATED)	
ITEM#	LIST	ITEM#	LIST
GH3	\$14.54	GHB3	\$15.74
GH4	\$16.24	GHB4	\$17.53
GH5	\$19.25	GHB5	\$20.76
GH6	\$21.63	GHB6	\$23.38
GH7	\$26.17	GHB7	\$28.26
GH8	\$26.61		
GH9	\$32.34		
GH10	\$36.82		
GH12	\$59.09		


PIPE FLASHING – FLAT WITH TALL CONE

SINGLE WALL	
ITEM#	LIST
TFP3	\$14.94
TFP4	\$14.94
TFP5	\$16.56
TFP6	\$20.84
TFP7	\$23.03
TFP8	\$24.84
TFP10	\$33.45
TFP12	\$49.38
TFP14	\$60.92
TFP16	\$76.38


PIPE FLASHING – ALUMINUM WITH DEAD SOFT ALUMINUM FLANGE

SINGLE WALL-STANDARD		DOUBLE WALL-STANDARD	
ITEM#	LIST	ITEM#	LIST
G4A DSA	\$39.70	GB4A DSA	\$52.79
G6A DSA	\$48.44	GB6A DSA	\$56.87
G8A DSA	\$64.18	GB8A DSA	\$66.26



**BACKDRAFT DAMPER
— BUTTERFLY**

GALVANIZED	
ITEM#	LIST
BD 4	\$15.10
BD 5	\$15.10
BD 6	\$15.10
BD 7	\$18.10
BD 8	\$18.10
BD 9	\$26.52
BD 10	\$26.52
BD 12	\$32.13
BD 14	\$47.30
BD 16	\$62.02
BD 18	\$85.43
BD 20	\$93.12
BD 24	\$153.00

DRYER DAMPER

ALUMINUM	
ITEM#	LIST
DD4	\$15.33
DD6	\$17.98



**BACKDRAFT DAMPER
— OFFSET PIN**

GALVANIZED	
ITEM#	LIST
OSP4	\$18.23
OSP5	\$18.23
OSP6	\$18.23
OSP7	\$22.05
OSP8	\$22.05
OSP9	\$27.93
OSP10	\$27.93
OSP12	\$38.13



**SPOOL DAMPER
(A.K.A. DAMPERED
START COLLAR)**

GALVANIZED	
ITEM#	LIST
GSD4	\$11.13
GSD6	\$11.13
GSD8	\$12.27
GSD10	\$12.78
GSD12	\$13.55
GSD14	\$14.15
GSD16	\$14.63
GSD18	\$15.03
GSD20	\$15.30



**ROUND VOLUME DAMPER
(SLIDE IN)**

GALVANIZED	
ITEM#	LIST
RVD4	\$3.90
RVD6	\$3.90
RVD8	\$4.73
RVD10	\$5.85
RVD12	\$6.10
RVD14	\$6.65
RVD16	\$7.22
RVD18	\$7.77
RVD20	\$8.30
RVD24	\$8.85



END CAP



PLUG



PLUG STYLE PIPE REDUCER

GALVANIZED	
ITEM#	LIST
PR4X	\$6.65
PR5X	\$6.65
PR6X	\$6.85
PR7X	\$9.78
PR8X	\$9.90
PR9X	\$13.32
PR10X	\$14.97
PR12X	\$18.68
PR14X	\$21.83



TAPERED REDUCER (THREE PIECE)

GALVANIZED		ALUMINUM	
ITEM#	LIST	ITEM#	LIST
TR4X	\$6.85	TR4XA	\$8.75
TR5X	\$6.85	TR5XA	\$8.75
TR6X	\$6.97	TR6XA	\$9.12
TR7X	\$6.97	TR7XA	\$9.12
TR8X	\$6.97	TR8XA	\$9.12
TR9X	\$9.15	TR9XA	\$11.55
TR10X	\$9.15	TR10XA	\$11.85
TR12X	\$14.25	TR12XA	\$17.70
TR14X	\$16.56	TR14XA	\$21.14
TR16X	\$20.56	TR16XA	\$25.58
TR18X	\$24.84	TR18XA	\$31.35
TR20X	\$27.84	TR20XA	\$36.42
TR22X	\$35.65	TR22XA	\$48.19
TR24X	\$36.42	TR24XA	\$66.76

GALVANIZED	
NO CRIMP	
ITEM#	LIST
FC3	\$4.67
FC4	\$4.67
FC5	\$4.67
FC6	\$4.67
FC7	\$5.07
FC8	\$5.78
FC9	\$6.50
FC10	\$7.15
FC12	\$7.82
FC14	\$10.83
FC16	\$19.48
FC18	\$27.45
FC20	\$28.93
FC22	\$31.28
FC24	\$39.10

GALVANIZED	
CRIMPED	
ITEM#	LIST
GP3	\$4.67
GP4	\$4.67
GP5	\$4.67
GP6	\$4.67
GP7	\$5.07
GP8	\$5.78
GP9	\$6.50
GP10	\$7.15
GP12	\$7.82
GP14	\$10.83
GP16	\$19.48
GP18	\$27.45
GP20	\$32.97
GP22	\$36.93
GP24	\$47.45

FLAT STYLE INCREASER REDUCER

GALVANIZED		ALUMINUM	
ITEM#	LIST	ITEM#	LIST
I/R4X	\$8.15	I/R4XA	\$8.60
I/R5X	\$8.15	I/R5XA	\$8.60
I/R6X	\$8.15	I/R6XA	\$8.60
I/R7X	\$9.05	I/R7XA	\$9.52
I/R8X	\$10.08	I/R8XA	\$10.61
I/R9X	\$12.45	I/R9XA	\$15.03
I/R10X	\$13.32	I/R10XA	\$16.08
I/R12X	\$13.87	I/R12XA	\$21.11



START COLLAR – STANDARD

GALVANIZED	
ITEM#	LIST
SSC4	\$2.68
SSC6	\$3.10
SSC8	\$3.68
SSC10	\$4.27
SSC12	\$4.70
SSC14	\$5.07
SSC16	\$6.17
SSC18	\$8.33
SSC20	\$9.10
SSC22	\$9.90
SSC24	\$10.97



START COLLAR – EXTENDED 6"

GALVANIZED	
ITEM#	LIST
ESC4	\$5.90
ESC6	\$5.90
ESC8	\$5.90
ESC10	\$8.67
ESC12	\$9.47
ESC14	\$10.30
ESC16	\$12.38
ESC18	\$14.97
ESC20	\$16.02
ESC22	\$16.46
ESC24	\$17.33



FOUNDATION/SOFFIT VENT

GALVANIZED	
DAMPER & SCREEN	
ITEM#	LIST
VDS616	\$10.35
VDS816	\$11.13
DAMPER ONLY	
ITEM#	LIST
VD616	\$8.07
VD816	\$8.53
SCREEN ONLY	
ITEM#	LIST
VS616	\$6.63
VS816	\$6.95
NO DAMPER OR SCREEN	
ITEM#	LIST
V616	\$3.57
V816	\$3.82



EAVE VENT – GALVANIZED

GALVANIZED	
ITEM#	LIST
EVG4	\$16.33
EVG6	\$17.67
EVG8	\$18.20
EVG10	\$19.03



EAVE VENT – COPPER

COPPER	
ITEM#	LIST
EVC4	\$28.28
EVC6	\$29.95
EVC8	\$31.63
EVC10	\$39.68



**Available in aluminum upon request.*

OTHER AVAILABLE PRODUCTS

SHUR-VENT (NATURAL GAS & LP)

GALVANIZED		ALUMINUM	
ITEM#	LIST	ITEM#	LIST
SV326	\$16.95	ASV320	\$20.25
SV426	\$16.95	ASV420	\$20.25
SV526	\$27.60	ASV520	\$28.65
SV626	\$27.60	ASV620	\$28.65
SV726	\$32.25	ASV720	\$36.75
SV826	\$32.25	ASV820	\$36.75
SV926	\$39.57	ASV925	\$44.25
SV1026	\$47.25	ASV1025	\$53.10
SV1226	\$61.95	ASV1225	\$70.50



PEAK VENT

ALUMINUM	
ITEM#	LIST
APV4	\$22.35
APV5	\$23.97
APV6	\$24.95
APV7	\$26.25
APV8	\$31.72
APV10	\$40.17
APV12	\$47.99



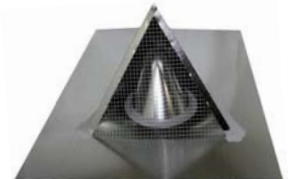
PLUMBER'S VENT

ALUMINUM	
ITEM#	LIST
PLV4	\$30.40



CRICKET FLASHING

GALVANIZED	
ITEM#	LIST
CF2	\$32.95
CF4	\$36.35





PHONE: (208) 336-1560 - OUTSIDE IDAHO: (800) 892-2277 • FACSIMILE: (208) 343-9679

Website: www.artiscaps.com • E-mail: artiscaps@msn.com

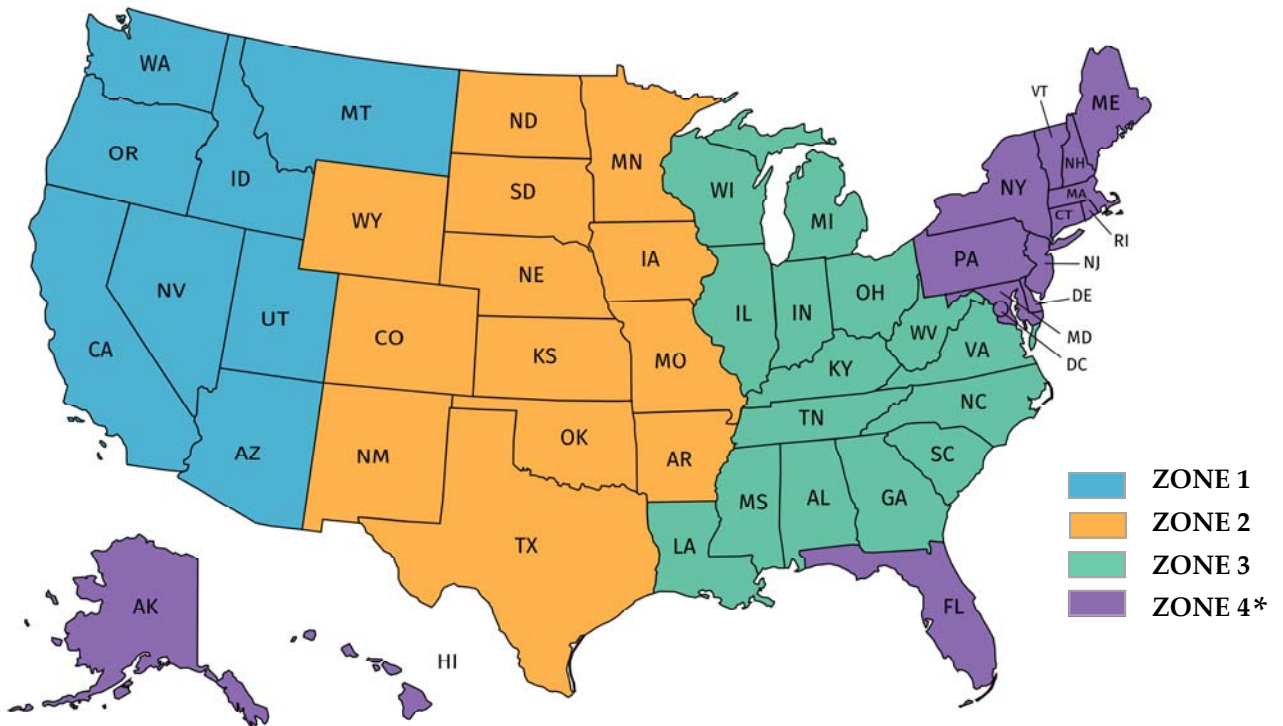
ORDERING INFORMATION

DISCOUNT MULTIPLIERS:	Multipliers are a percentage off of list prices. All special orders are quoted at net price and are not eligible for multiplier discounts. If a change in multiplier is necessary, you will be notified prior to the change being made.
MATERIALS:	Most catalog numbers denote gauge of material but if a special gauge material is needed, please be sure to specify when ordering (Example: GVC 626—The 26 at the end of the catalog number denotes 26 gauge material). Most items are available manufactured from special materials; copper, stainless steel and powder-coated. Please inquire which items are available in these materials. Various screen sizes are also available; Galvanized 1/8", 1/4" and 1/2", Aluminum 1/8" mesh, Stainless Steel 1/8", 1/4" and 1/2", Copper 1/8" and 1/4". 1/4" screen is standard. Specify when ordering if a different screen size is desired.
OVERSIZE CARTONS:	Certain cartons because of their size are rated at cubic inches rather than weight. Parcel companies are using Oversize 1 which is rated at 108 cu. in. or 30 lbs. and Oversize 2 which is rated at 130 cu. in. or 70 lbs. On cartons sized as OS2 we check the cost with LTL carriers to find the cheapest way to ship.
RETURN POLICY:	A 20% restock charge will be assessed on all items approved for return to stock. A return authorization number will be required for all items returned and return freight will be prepaid by the customer. All items must be in new/undamaged condition for resale in order to obtain credit. All items returned will be for merchandise credit only. Special order/non-catalog item sales are final and will not be accepted for return. Return authorizations will expire 30 days after issue and returns will not be accepted nor will credit be issued past that time. No refunds, cash or check will be issued.
CANCELLATIONS:	Once purchase order material is in process the purchase order cannot be cancelled. If a purchase order must be cancelled, all production costs incurred from the date the purchase order is placed to the date of cancellation will be the customer's responsibility.
MINIMUM ORDERS:	Any order under \$100.00 will incur a \$5.00 handling fee.

DELIVERY TERMS

FREIGHT POLICY:	All orders shipped below free freight minimums will be prepaid by Artis Metals Company (to provide customers with our freight discounts) and added to the customer's invoice unless otherwise specified. All Next Day, Second Day and Third Day shipments will be prepaid and added to the customer's invoice and are not included in our Free Freight Allowance. It is the customer's responsibility to provide accurate shipping information. Any necessary address corrections made and charged for by freight companies will be billed back to the customer in the event of an incorrect or incomplete address. <u>Please note that the free freight allowance does not apply to Special Order items not listed in the catalog.</u>
ROUTING:	All orders will be shipped the most cost effective way unless otherwise specified by the customer. If the customer chooses their own freight company that customer will be responsible for all freight charges. This may include any freight service charge or prepaid freight charges being added to the customer's invoice. All free freight allowed orders will be shipped best way according to the discounts we receive from our carriers.
UPC CODING:	We offer an Excel Spreadsheet containing all of the UPC Codes for our products. You can request a copy of the spreadsheet to be e-mailed to you by calling, faxing or e-mailing Artis Metals Company, Inc. We also offer product UPC labeling services at customer's request.

FREE FREIGHT ALLOWANCES



ZONE 1	\$1,200 (CA -- \$25 surcharge)
ZONE 2	\$2,000
ZONE 3	\$2,500
ZONE 4	No Free Freight Allowance
	Zone 4 includes Alaska, Connecticut, Delaware, Hawaii, Maine, Massachusetts, Maryland, New Hampshire, New Jersey, New York, Pennsylvania, Rhode Island, Vermont, and Canada
INTERNATIONAL	Contact us for pricing and available options

Note: Non-catalog, special order items do not qualify for Free Freight, unless specified in the quotation.

TERMS OF SALE

TERMS:	Payment is due Net 30 Days from the date of invoice. Any accounts with invoices over 60 days old will be placed on credit hold and will ship C.O.D. at list prices until the accounts are brought completely current including all interest charges accrued at which time we reserve the right to review multiplier status and make any changes deemed necessary.
---------------	---

*Proudly Providing High Quality American Made
Products To The HVAC Industry For 80 Years*



"A Tradition of Quality Since 1937"

® *Artis Metals Company*

Artis Metals Company, Inc.
3323 Chinden Blvd., Boise, ID 83714
Website: www.artiscaps.com
E-mail: artiscaps@msn.com
Phone: 208-336-1560
Toll Free: 800-892-2277
Fax: 208-343-9679